

FLEXI HP Edition

Version **24**

The Flexi HP Edition product offers the total solution for design, print, print-and-cut and direct-to-vinyl production workflow. It includes a powerful 64 bit RIP system with a full printer and cutter production feature-set, as well as a complete design application that makes sign and print design easy. No matter what type of job you need to produce, Flexi has the tools.

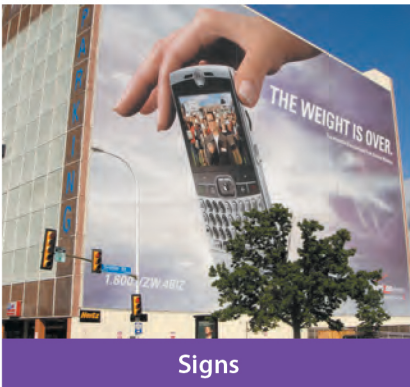
New in **FLEXI** HP Edition v 24

- SAi Connect data and tool dashboard
- Order Reprints
- Unicode
- Improved Nesting option
- Improved layers job printing (White)
- Create Contour Cuts in Production Manager
- See Print Thumbnails in Production Manager
- Labeling Printing Features
- Improved Tiling information in Production Manager
- Import Presets from Production Manager into FlexiDESIGNER

Standard Features

- Fast and powerful 64 bit RIP engine
- Complete design, print, print and cut solution
- Spot color mapping
- True shape nesting
- Banner finishing tools
- Easily edit vector and other image types
- Add cut lines in just a few clicks
- Seamlessly design and send to print
- G7 Certification & PANTONE Fine-Tune Spot Color Tool
- Works on Win OS 11, Win OS 10

Applications



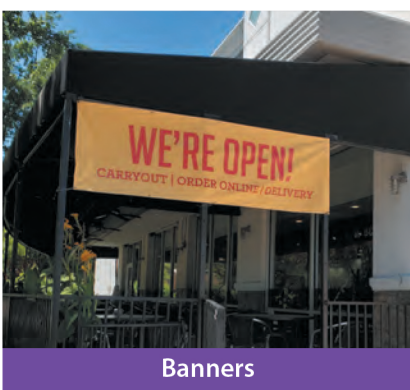
Signs



Decals & Stickers



Vehicle Wraps



Banners



Rigid Graphics



Vinyl Lettering



SAi Flexi® HP Edition Feature Comparison

HP Flexi
BASIC

HP Flexi
PREMIUM

HP Flexi
PRINT & CUT

HP Flexi
SIGN & PRINT

Flexi
COMPLETE
(subscription)

DESIGN

Variable Data			•	•	•
Crop Marks for Manual Trimming		•	•	•	•
Select Cut Direction		•	•	•	•
Cleaver by Path		•	•	•	•
Define Cut Order		•	•	•	•
3M, Avery, etc. Vinyl Color Palette Libraries		•	•	•	•
Gradients - SpotColor, RGB, CMYK		•	•	•	•
Grade 2 Braille		•	•	•	•
QR Code Creator for Interactive Signage		•	•	•	•

PRINTING & PRODUCTION

NEW - Contour Cut Path Creation in Production Manager			•	•	•
NEW - Prints Reorder			•	•	•
NEW - Adding Jobs or Tiles to a Nested Group	•	•	•	•	•
NEW - Transparent Mask as White Under Flood including .TIFF & .PNG Files			•	•	•
NEW - Transparent Backgrounds		•	•	•	•
NEW - Kongsberg File Support		•	•	•	•
NEW - Choke Only RIP Generated Under White Data		•	•	•	•
IMPROVED - Import Presets to RIP and Print for FlexiDESIGN		•	•	•	•
NEW - Thumbnail Job & Tile Preview in Production Manager Queue	•	•	•	•	•
Layers Printing		•	•	•	•
Enhanced Print-While-RIP	•	•	•	•	•
Output Channel Preview		•	•	•	•
Artboard Contour Cutting		•	•	•	•
Adobe® Illustrator® Layer Support		•	•	•	•
User Data Backup		•	•	•	•
Graphtec Barcode Support		•	•	•	•
Contour Cut Line Preview		•	•	•	•
Save for Output Size Compensation per Preset		•	•	•	•
IMPROVED - JIG Templates (Now Save as .EPS Files)		•	•	•	•
Ruler & Print Copy Center		•	•	•	•
Automatically Nest	•	•	•	•	•
Auto Tile and Smart Nest			•	•	•
Interactive Tiling	•	•	•	•	•
Direct Vinyl Cutting			•	•	•
Banner & Canvas Finishing Tools		•	•	•	•
Textile Step & Repeat		•	•	•	•
Smart Hot Folders for Automated Workflow		•	•	•	•
Simultaneous Printing	1	2	1	3	5

COLOR MANAGEMENT * Feature Included in Color Profile Package. Color Profile Package Sold Separately.

G7 Certification	OPT*	OPT*	•	•	•
Custom Ink Set Support (if printer supports)					•
PANTONE® Fine-Tune Spot Color Tool			•	•	•
Spot Color Mapping		•	•	•	•
Color Replacement Tool		•	•	•	•
Wizard-Based ICC Media Profile Creation			•	•	•

SUPPORT

NEW - SAi Connect		•	•	•	•
Software Updates and Upgrades			•		•

SUPPORTED PRINTERS

	HP Latex 115,315, 335	All HP	HP Latex 1xx,3xx, 6xx,7xx	All HP	All HP + Others
--	-----------------------	--------	---------------------------	--------	-----------------